

Fogo Parish Church Welcomes Duns Presbytery Roadshow Delivery Team

Moderator, Susan Patterson

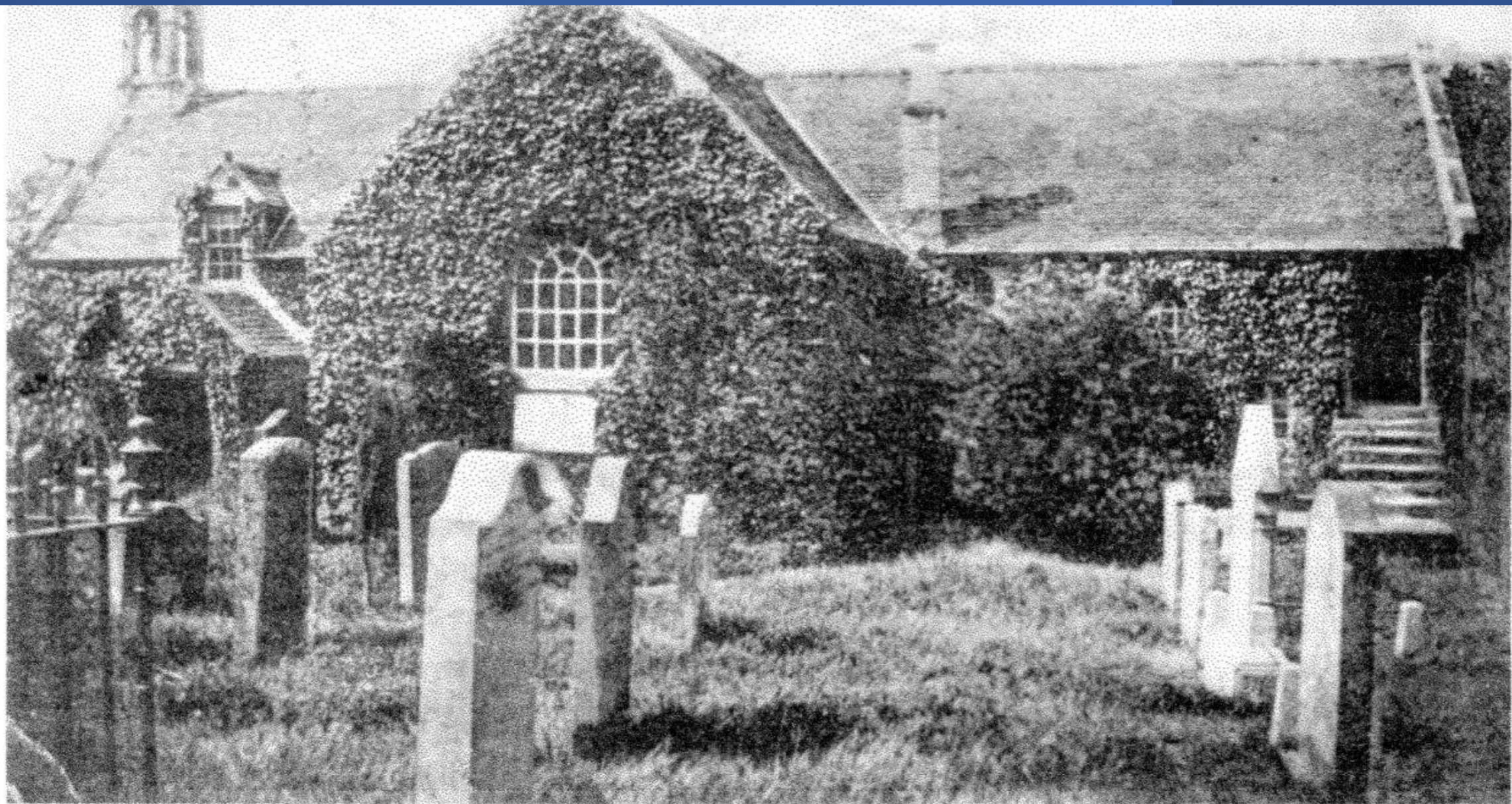
Rev Dr Adam Hood

Rev Dr Dane Sherrard

The Very Rev Dr Susan Brown

Tom Thorburn





The previous slide showed the earliest known photograph of our Church. Much has changed since it was taken. The heating system and its chimney have disappeared and are replaced by what is now the main entrance and porch, and more noticeably the ivy has gone. Change is a major theme throughout this presentation.

Fogo Church has been on this site for a great many years, somewhere in the region of 1,000 years. St Cuthbert would have passed through here, albeit before the Church was established on his way from Melrose Abbey to Lindisfarne. So enthused are the Congregation, major plans are well underway to enable people to celebrate and engage in the wonderful history of St Cuthbert.

Communion Silverware

Fogo's two Communion
Chalices are the oldest
in service in Scotland!



A Warm Welcome awaits you at Fogo Kirk

- In 2016, Duns Presbytery took the decision to put Fogo Parish Church into the Guardianship of Presbytery. The Rev Dr Dane Sherrard was appointed as Interim Moderator at Fogo. From this milestone moment, big changes took place, and indeed are still taking place. Worship has increased from one Sunday each month, to every Sunday.
- So successful was Dane in building a new Congregation and enlarged Kirk Session that Fogo successfully applied to come out of Guardianship a year early and duly elected Dane as their Non Stipendary Minister.
- In this photo we see Dane welcoming members Gill and Lorna.



The 'Warm Welcome' continues: -

- Once in the door of our Church you will be met with a warmth so uncommon in church buildings of this age. Three 'Air to Air' heat exchangers now keep Fogo at a constant temperature of around 20 degrees centigrade 24/7. Compare this to some six years ago when winter Services were shortened to some 15 minutes due to it being so cold! This system aligns perfectly with the COS Environmental Policy.





The 'Warm Welcome' continues: -

- Fogo Nursery Children and Parents enjoy a fantastic Christingle.

Assessor Elders: -

- At the start of Guardianship, Duns Presbytery arranged for Fogo to have two Assessor Elders to assist the Kirk Session with the re-birth of our Church.
- In this photo we see Tom Stewart, Session Clerk, presenting Assessor Elders Bob Kay and Roger Dodd with a book in appreciation of their input at Fogo.





Congregational Participation

- Dane was keen that Fogo should be able to, not just fund itself but also to conduct its own worship, such that the Church would be here for future generations of worshipers.
- Participation in worship ranges from Elders and Members taking prayers and readings, to a whole Service. At times there are up to 15 members participating in a Service. To date there are 21 people taking active parts.

Congregational Participation

- In this shot we see John taking the Service as Dane had to at the last minute be in the 'driving seat' live streaming the Service.
- Taking, and Participation in Services has had the much welcome result of increasing numbers of people coming to Fogo Church.





The revamp begins: -

- The old organ was long past being repaired, so the decision was taken to remove it and replace it with a modern keyboard. The Congregation now enjoy a fantastic range of beautiful music to accompany their hymns, provided by Rachel.

The Revamp continues: -

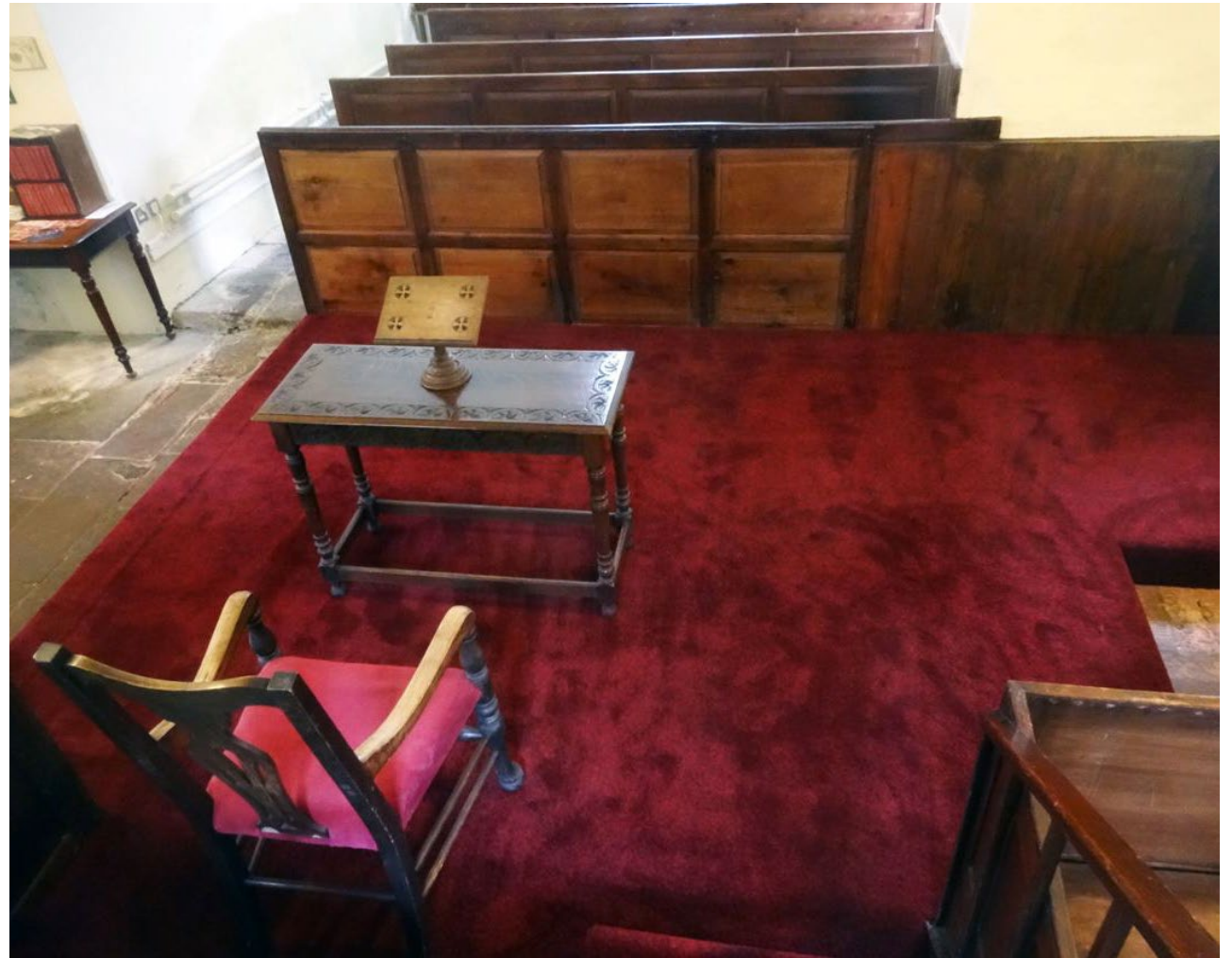
- With the old organ removed, it was possible to create a Chancel. This allowed greater flexibility in conducting wedding ceremonies, funerals and an excellent area in which the minister can have time with the children.



The Revamp Continues: -

The Chancel is completed with a new carpet fitted.

If we look closely, we can see the old heating system along the South Aisle wall and the Pews.





Induction & Admission of Elders: -

Our new Chancel is put to good use with the Ordination & Admission of Elders



Adult Baptism

- The Chancel area is put to good use again during a very moving and special Adult Baptism.



Children's Time

The Children are totally absorbed in their talk with the Minister – and so are the adults in these uncomfortable pews!

Christmas

Fogo Nursery Children Christmas Party which was attended by their teachers, parents and grandparents. Everyone is very attentive to the Christmas story but maybe the next slide will give some further information as to this.



Advent Calendar

With an Advent Calendar like this, even the most seasoned of us could not fail to be enthralled.



Vestry Conversion: -

- With no facilities to provide tea and coffee after the Service, work was undertaken on reflooring and decorating the former Vestry.
- This very useful space greatly enhanced 'The Church Family' theme with almost every Member and Visitor staying on for refreshments and a good old-fashioned chat.





New Kitchen Area is put to good use for a post meeting buffet lunch.

Further Improvements

- With the New Heating System having defeated the dampness, work was begun on stripping out and renewing the plasterwork in the South Aisle. Advantage was taken at this time to remove the pews from this area of the Church and refloor it. This was a huge undertaking for the team.



Revelation!

- Not something you would expect to find during refurbishment?
- Yes, a Gravestone built into the East Wall of the South Aisle!





Sitting Comfortably?

- Out with the woodworm infested, and very uncomfortable Pews and in with the New and very comfortable seats.

Conference

- With Comfortable and Flexible Seating, we were able to hold our Conference on where to take our Church. One just could not have held such an afternoon's meeting without the new seating.



Entertainment

- Church and Community audiences can appreciate not just the musicians but their comfort as well during an excellent evening of entertainment.





Frog & Henry

- The world-famous jazz band Frog & Henry have entertained a packed Church on both of their visits when touring Scotland.

Garden Party

Our Garden Party in 2019 hosted an array of young musicians from over Berwickshire and beyond.

This event was hugely successful and attended by some 500 guests throughout the day.





Garden Party

The 500 were well entertained

Garden Party

Jim along with his fellow BBQ team mates prepare to feed the 500



Garden Party

More food for the 500 is prepared.





Christian Education

- Christian Education is a major part of Fogo Parish Church.
- Education evenings were initially held in members houses, as the Church at that time was not suitable for such events.



Christian Education

Our Pilgrimage to The Holy Land in Jan/Feb 2020 shows the 27 Pilgrims in Istanbul Airport.



Christian Education

Our Communion Service
in the Shepherds Field
Cave at Bethlehem.

Christians Helping Each Other

- We visited Jeel al Amal School in Bethany an extremely poor area within the occupied West Bank. One could not help but shed a tear for the orphans and underprivileged children in this wonderful school which depends on charity to survive.
- Fogo Church and the Pilgrims regularly send financial support to Jeel al Amal.





Happy Faces

- Pete is Fogo's contact with Jeel al Amal. Here we see the difference our contributions make.
- To date we have donated £5,000 to the school.

Capernaum

- Jesus recruited his first Disciples at Capernaum.
- This shot shows the Fogo Pilgrims in the synagogue with their terrific guide Nael.
- A very moving and memorable time in our lives.



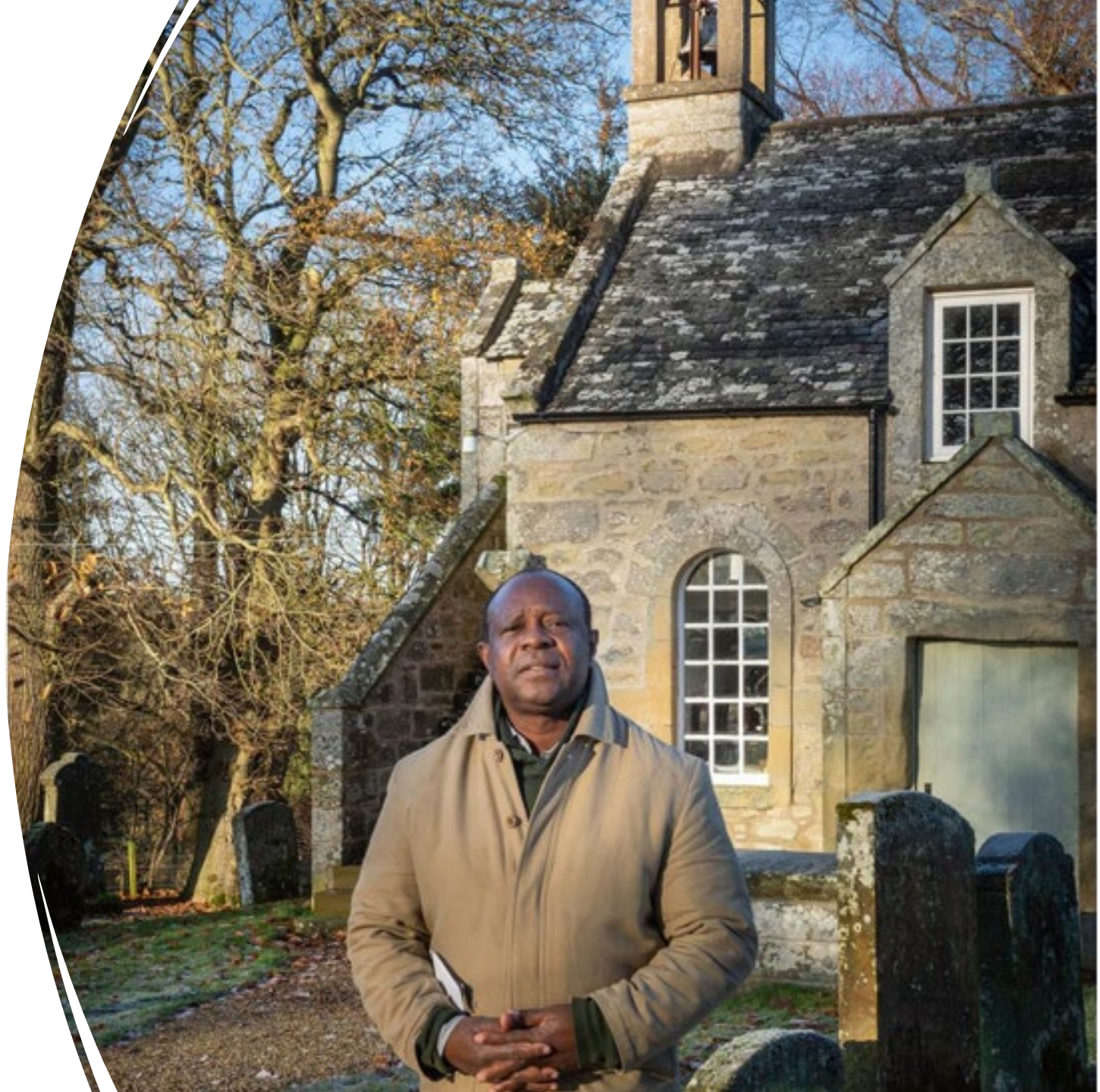


Masada

- Herod's fortified palace is accessed by a large cable car. While everyone else took this route up and down the mountain, John however decided to go on foot and actually beat us to the top!

Mission Partner

- Dr Linus Malu is the Presbytery of Duns' Mission Partner in Malawi.
- Linus visited Fogo where he gave us a wonderful insight into his work with women to get them into work to support their families.
- Fogo to date has supported Linus with a donation of £2,000 in August and £2,000 in December 2021.





Presentation Time

- Eck very carefully presents the correct books to Clare and Bob. Out of view was Eck's big Sister, Alice carrying out similar duties.



Clare Fleming

- Clare was a devoted elder and member of the congregation at Fogo.
- Very sadly, Clare passed away but Clare being Clare she wanted to see Christianity grow at Fogo and the wider community. Such was here strong belief, she left £50,000 to our Church for Mission work. Here we see Clare's Daughter, Jane on the opening day celebration of the dedication of 'Clare's Room'.



The Pandemic

- Keen that Worship should not be left out of our lives due to restrictions placed on UK citizens, Dane very quickly organised wonderful uplifting Services online.



New Noticeboard

- Ever keen to get the message out to the wider community what is available, and on in our Church, this new noticeboard was procured and erected.



'Welcome Sign'

- Much to the relief of the congregation, Rachel's wonderful 'Welcome' Noticeboard was quite correctly repositioned at the Church.

St Cuthbert

- To celebrate St Cuthbert, work is underway to create a Pilgrimage Walk around the edge of the Church Yard. There will be a series of information plaques strategically sited on the Walk.
-

Cuthbert describes his vision to his friends.

“Really, I think that the person I saw being carried away into the light, which choirs of angels leading him to heaven, must have been a holy bishop, or some other excellent, faithful man.”

By saying this, Cuthbert, the man of God, inspired the hearts of other shepherds to worship and praise God.

When morning came, they learned that Aiden, the bishop of the church of Lindisfarne, a man of great goodness, had died at the very time Cuthbert had seen him being carried up to heaven.

Cuthbert returned the sheep he had been watching to their owners, and decided to enter a monastery.

His mind was now completely serious, and he was ready for a more structured way of life.

From Bede's
'Life of Saint Cuthbert'





St Cuthbert's Chapel

- Dave and Tom S are busy working on St Cuthbert's Chapel, panelling the lower section of the walls. Once completed, Rachel will then tastefully decorate the upper sections of the walls. The Walk will terminate in the Chapel.



Our New Coffee Bar

- Ever keen to continue and extend our Church Family, the coffee and tea facility was moved out of the former vestry to make way for St Cuthbert's Chapel.
- Here we see the members enjoying a coffee and birthday cake!

1st Class Comfort

Comfort is important in Church. Tom S and Dave created this area and the one in the previous slide to allow a comfortable space for coffee.

John has recently started a hosting coffee on Wednesday mornings – these have been well attended.





Congregational Roll

- Fogo has a very 'active' roll. To expand on 'Active', we are very forward thinking as to how to attract more people to hear the 'Word of God'. Tonight, you have seen just how 'Active' a congregation we are.
- Our Roll has increased from 45 to 70 in the last 12 months. This increase would have been greater had there not been those members that moved away to other presbytery areas, even countries.

Finally

- Just as God promised Noah that he would not flood the World again, and would protect us with his bow, we promise that: -
- You will always be Welcome at Fogo Church.

